

connected

the ProLeiT Group information service

2.19

Plant iT and brewmaxx:
Upgradable since 1994

MES in the beverage industry:
New specialist article from ProLeiT

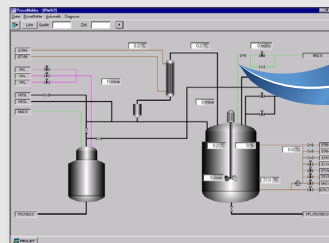
Maui Brewing Company:
ProLeiT automates Hawaii's largest craft brewery

BASF Personal Care and Nutrition GmbH:
Upgrading the FE plant to Plant iT V9.60

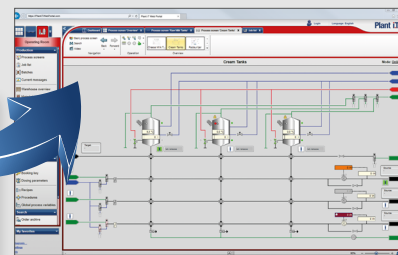
Plant iT and brewmaxx: Upgradable since 1994

www.proleit.com

Flexible and at the cutting edge of technology – for the past 25 years. ProLeiT is proud of the fact that users have been able to upgrade its in-house developed and user-friendly process control systems (formerly known as ProLeiT OS-NT) since 1994. Our customers can purchase a system upgrade licence whenever they want to keep their ProLeiT software solution up-to-date. Depending on the age of the existing system software, only a minor revision is usually necessary. Even system versions that have been in operation for more than 15 years, some of which are equipped with S5 controllers, can still be upgraded – this is what distinguishes ProLeiT's automation solutions in the industry. A subscription-based upgrade has ensured and will continue to ensure that upgrading does not turn into a complicated and time-consuming new project.



Many of our long-term customers benefit from this process and perform upgrades on a regular basis. For instance, ProLeiT has successfully carried out several system upgrades for Ringnes, Norway's largest brewery and a subsidiary of the Carlsberg Group. In doing so, our employees focus on keeping disruptions of business processes to a minimum. This is also achieved with more complex upgrade projects, such as the one for the private dairy Bauer in Wasserburg am Inn.



In the future, ProLeiT will continue to offer flexible and simple system upgrades that maintain the projected performance. ProLeiT has, therefore, been offering its customers the opportunity to subscribe to this service for a number of years now. In addition to many other advantages, it also includes regular upgrades. This guarantees customers always stay up-to-date while benefiting from a high level of planning and investment protection.

subscribe to this service for a number of years now. In addition to many other advantages, it also includes regular upgrades. This guarantees customers always stay up-to-date while benefiting from a high level of planning and investment protection.

MES in the beverage industry: New specialist article from ProLeiT

www.proleit.com

ProLeiT's most recent specialist article 'Manufacturing Execution System – Added Value and Opportunities for the Beverage Industry' appeared in issue 04/2019 of 'Beverage Industry'. In his professional publication, Dr. Thomas Wunderlich, Sales Manager and Head of Dairies & Beverages, underlines the fact that a manufacturing execution system optimizes the production processes of beverage companies in many ways.

The core questions of the article are:

- To what extent do companies – be it small or large plants – benefit from an MES?
- How can beverage companies use an MES to record and analyze large amounts of data (big data), thereby optimizing their plants?
- Which innovative functions – e.g. with regard to paperless production and optimized manual processes – does MES Plant Integrate iT from ProLeiT offer?

Click this [link](#) to view the entire specialist article.

Maui Brewing Company: ProLeiT automates Hawaii's largest craft brewery

www.mauibrewingco.com

brewmaxx recently started operating on one of the Hawaiian Islands – namely on Maui, the second largest island of the archipelago. We were delighted when the ProLeiT project commenced with Maui Brewing Company at the end of October 2017 to automate its entire brewery in Kihei, featuring two brewing lines and a cellar.

Maui Brewing Company (MBC) is Hawaii's largest craft brewery and produces roughly 70,000 hectolitres a year. Founded in 2005, the brewery focuses on island brewed ales and lagers. Almost 100 percent of its energy needs are covered by solar power. MBC's distribution footprint includes 23 US states as well as Canada, Japan, South Korea and Chile.

The control system of Maui Brewing Company was originally based on isolated systems. ProLeiT's initial task was, therefore, to connect

the individual systems. A particular challenge was that the concept for the migration to brewmaxx V9.50 had to be largely created remotely. More precisely: by staff at ProLeiT's Spanish branch office. Since ProLeiT does not have a subsidiary in Hawaii and support and resources are also somewhat more limited on an island. After in-depth research, evaluations and tests, the project team came to the conclusion that the existing I/O peripherals could basically be retained – a major cost advantage for our customer. At the beginning of 2019, the ProLeiT employees successfully migrated the two brewing lines, including the malting facility and the cellar, on site.

Maui Brewing Company is expanding – and plans to implement further projects with ProLeiT. For example, the brewery is keen to expand the CIP plant (Cleaning in Place). ProLeiT looks forward to future cooperation with MBC and sends the very best wishes to Hawaii.



BASF Personal Care and Nutrition GmbH: Upgrading the FE plant to Plant iT V9

www.basf.com

ProLeiT has been working with BASF, the world's leading chemical company, since the mid-90s. A further chapter of this joint success story began at the end of November 2017: ProLeiT was commissioned to implement Plant iT V9.60 into the FE (food emulsifier) plant of BASF Personal Care and Nutrition GmbH in Illertissen, Germany. BASF Personal Care and Nutrition GmbH, part of the BASF Group, produces and markets food ingredients and dietary supplements for the human nutrition market.

At the time of project transfer, the respective food emulsifier plant was automated with a previous version of Plant iT. The central Plant Batch iT V9.60 process control system, which monitors and controls recipe-controlled batch processes, was used for the upgrade. It was particularly challenging to integrate the previous processes, which, for example, did not provide for a phase controller, into the current system version. Furthermore, ProLeiT had to create a new operating concept. The fact that we were able to rely on comprehensive plant documentation was a major advantage.

The upgrade has optimized the processes in the FE plant in many respects: System adjustments and extensions are easy to install. Moreover, far fewer manual operating steps are now required. The FE plant operators can also use a comprehensive materials management system thanks to the Plant iT material module. Plant iT material is an integral part of the batch system and provides an overview of all material movements. The Plant Direct iT Visu-Recorder add-on automatically records the process activities of the control system and visualizes them on demand – enabling BASF employees to also identify and solve problems later on.

The upgrade to Plant Batch iT V9.60 was completed in November 2018. Follow-up projects are planned or have already commenced. For example, ProLeiT is to automate a final, not yet connected section of the grinding process with Plant Batch iT V9.60. The FE plant will also be expanded to include a big-bag feeding system, eliminating the need for the time-consuming process of manually emptying bags into feeding systems. ProLeiT looks forward to future cooperation.

