

connected

the ProLeiT Group information service

3.15

PepsiCo (Wimm-Bill-Dann Lianozovo Dairy):
Migration project to V9 completed

ProLeiT AG:
Process control technology & Industry 4.0

Softwerk Professional Automation GmbH:
Re-automation of the Fixkraft organic mixing plant

ProLeiT AG:
Development of a qualified energy management system

PepsiCo (Wimm-Bill-Dann Lianozovo Dairy): Migration project to V9 completed

www.wbd.ru



The leading producer of dairy products and fruit juices in the Russian market, Pepsico, successfully completed the largest migration project at its Lianozovo Dairy in June 2015. The project, entitled "2070 Raw Milk WBD LMK", witnessed an intensive migration process to upgrade the raw milk division to the latest version of our process control system Plant iT V9. The specific challenge of this project: twenty-six 150 tonne tanks and over 40 milk lines with four pasteurising units and the CIP station had to be migrated into the V9 environment in a limited period of time. The hardware with over

1200 valves, two PLCs, and two workstations each with three LCD panels had to be installed within eight hours. The intended plan was for the entire division to subsequently use the new system. On-site commissioning was carried out in 12 and 24-hour shifts to ensure successful completion without system downtime in just three weeks. The entire project took only six months. Due to the large number of old process images, German ProLeiT staff members helped their Russian colleagues to develop new, scalable ones. The newly integrated process image designer played a key role, allowing these tasks to be realised effectively and efficiently. Besides increased user friendliness for WBD, this project also helped to forge stronger links between international staff. The project was completed successfully, and on time, at the end of June.



ProLeiT AG: Process control technology & Industry 4.0

www.proleit.com

Industry 4.0, Internet of Things and Big Data are widely used buzzwords. However, it is not always obvious what these terms actually mean and which potential they offer, in particular, for the process industry. On the cusp of the fourth industrial revolution, these technologies must be used and integrated into production plant processes, thus creating the smart factory. Within this networked factory, software, mechanics, electronics and humans are seamlessly interconnected along the value-added chain. In order to meet this vision, new requirements are necessary for the entire

process industry. In a recently published video, ProLeiT explains not only the meaning of Industry 4.0 for process automation, but also how it could represent an integral part of the firm's process control systems and MES solutions. Networked and self-optimising systems can make autonomous decisions based on predefined rules, in less time and with lower costs. They therefore communicate actively and intelligently with each other. Discover how ProLeiT is already shaping the more efficient processes of tomorrow, today.

[Industry 4.0 for process automation](#)



Softwerk Professional Automation GmbH: Re-automation of the Fixkraft organic mixing plant

www.softwerk.at



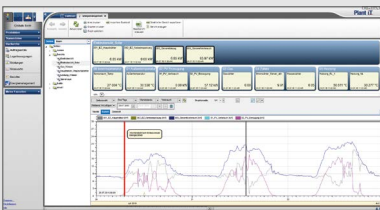
At the end of the year 2014, the Austrian ProLeiT system partner Softwerk Professional Automation GmbH started operating the first organic mixing plant from Fixkraft with Plant iT V9. Fixkraft is one of the largest producers of animal feed in Austria. Due to the changing requirements for "organic project operators", it became necessary to manufacture organic animal feed at a separate production line. Re-automation with Plant Batch iT V9 resulted in the generation of an improved, integrated system. It enables the client to manage all its processes within a centralised structure – from raw material delivery and ingre-

dient mixing to a wide range of recipes and pressing and loading of the pellets. Aside from expansive and comprehensive reporting solutions, a key added value of this re-automation is the ability to start individual procedures manually.

Besides implementing the process control system, Softwerk is also responsible for first level support for Fixkraft. This means Fixkraft benefits from 24/7 system support, even on public holidays and at weekends. Local presence ensures rapid and flexible assistance in the unlikely event of system failure. As the system supplier, ProLeiT offers second and third level support and continues to support its system partner in terms of design, realisation and migration. "We very much appreciate the solution-driven and uncomplicated cooperation with ProLeiT and look forward to new joint projects in the future," says Thomas Neudorfer, Managing Director of Softwerk Professional Automation GmbH.

ProLeiT AG: Development of a qualified energy management system

www.proleit.com



Intelligent energy management systems (EnMS) can deliver considerable savings. ProLeiT has additionally developed a qualified EnMS that complies with the internationally recognised standard DIN EN ISO 50001. To determine energy consumption within a plant and to constantly improve it, we advise production firms to integrate the new energy management system into the existing Plant iT or brewmaxx process control system as an add-on. All EnMS functions and reports can be con-

trolled and retrieved via the normal control system interface. A detailed analysis is carried out based on the recording of all the as-is states of primary and secondary energy sources and other media. This energy monitoring process data is subsequently displayed through uniform reporting – compared with variables over various time periods and events. In light of intelligent energy data recording, it is possible to avoid load peaks and to use load valleys in the best way possible. The new energy management system helps to cut operating and manufacturing costs considerably by detecting plant areas with the highest level of consumption and revealing faulty units and malfunctions.

Operators of energy intensive production plants will definitely profit from the new Plant Acquis iT EnMS or brewmaxx EnMS designed to the regulations of the German Federal Office for Economic Affairs and Export Control (BAFA).