

# connected

the ProLeiT Group information service

1.15

**Revolution Brewing:**  
Craft beer made in Chicago

**ProLeiT AG:**  
Plant iT EMS is eligible for federal funding

**Privatbrunnen Tönnissteiner:**  
"Food Defence" thanks to Plant iT

**ProLeiT AG: New Competence Center: Dairy Industry & Non-carbonated Beverages**

## Revolution Brewing: Craft beer made in Chicago

[www.revbrew.com](http://www.revbrew.com)

Revolution Brewing produces craft beer predominantly for the Chicago metropolitan area. The trendy craft brewery creates fifty



different beer brands to meet the growing demand for new flavours and more variety. Managing partner Josh Deth first came into contact with craft brewing at the end of the 90s while working at Golden Prairie Brewing and Goose Island. After coming across a cool, old building in Chicago with a nice tin ceiling,

the idea of his very own brewery bubbled up again. Revolution Brewing opened up on Milwaukee Avenue in February 2010 after three years of planning. As soon as you enter the [brewpub](#), it is obvious that Josh is a dedicated craft brewer who puts his heart

and soul into the brewery. The attention to detail is the tap room's key to success, and it has become a bustling, neighbourhood institution where friends and families meet to enjoy the freshest beer in town. The rapid growth of craft breweries in the U.S. means expansion has been the name of the game from day one. Production at the "Kedzie Avenue Brewery" began in the spring of 2012. Today, it is one of the largest in Illinois where kegs, cans, and bottles are filled with popular beers from Revolution Brewing for distribution across Chicagoland. Within just three years, however, the brewery, which is about 1.5 miles away from the brewpub, reached its capacity limits and a building extension was agreed. Josh decided to add a further brewhouse and a new cellar to the Kedzie production facility. ProLeiT Corp., ProLeiT's U.S. subsidiary, was commissioned to automate the new brewhouse and cellar at the end of January 2015. The system of choice is the brand new generation brewmaxx Version 9. The new plant should be up and running by June 2015. And once the project has been successfully completed, it is the turn of the old brewhouse and existing cellar to be migrated to brewmaxx V9.

## ProLeiT AG: Plant iT EMS is eligible for federal funding

[www.proleit.com](http://www.proleit.com)

If a company increases its energy efficiency through an energy management system, it not only cuts energy costs but is also entitled to funding. Standard DIN EN 50001 as a means for tax benefits and funding from the German Federal Office for Economic Affairs and Export Control (BAFA) makes energy management even more attractive for companies. Energy management systems measure and monitor energy consumption, relevant parameters for energy consumption and energy performance figures, and therefore cover aspects of DIN EN 50001 – the European standard for energy management. The German Federal Office for Economic Affairs and Export Control (BAFA) was entrusted with managing the support scheme when the guideline for funding energy management systems came into force on 22.07.2013.

The following measures are eligible for funding:

1. Initial certification of an energy management system
2. Initial certification of energy controlling
3. Acquisition of measuring, metering and sensing technology
4. Acquisition of software for energy management systems

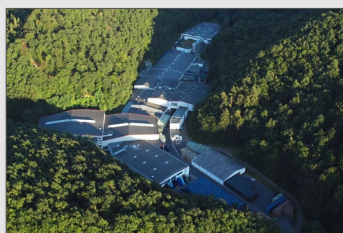
Plant iT EMS is an energy management software which can be used as an add-on for Plant iT/brewmaxx and meets the minimum requirements placed on energy management software by BAFA. These basically include: DIN EN 50001 conformity, automatic output of alarms when thresholds are exceeded, data analysis, visualisation, support and staff training as well as the ability to be integrated into existing systems.

BAFA rated Plant iT EMS eligible for funding on 31.01.2015. Click [here](#) to download the leaflet on the funding of energy management systems and the list on the BAFA website (German only).

## Privatbrunnen Tönissteiner: “Food Defence” thanks to Plant iT

[www.toennissteiner.com](http://www.toennissteiner.com)

Privatbrunnen Tönissteiner Sprudel Dr. C. Kerstiens GmbH is one of the most renowned German companies in the mineral spring sector and markets approx. 120 million fillings each year. Since a large percentage of the production is exported to the Low Countries, the brand is one of the largest mineral water exporters in the German mineral spring sector. But what makes this even more extraordinary is that the private, family-owned company is not incorporated into or supported by a large group. A wide variety of natural mineral waters, fruit juice drinks and soft drinks are bottled at the company's headquarters in Brohl-Lützing (Rhineland-Palatine). In October 2014, ProLeiT was awarded a contract to integrate the water springs. The existing six springs (“well houses”) for the production of mineral and drinking water were to be connected to a central control unit – including operating data acquisition and pump control. The challenge of this project was to preserve the “International Food Standard” (IFS), an important guideline for ensuring safe food production, particularly for the manufacturers of trade brands. The German company has met all



the requirements and standards of this accredited test and validation method – for more safety in food production – since 2012. Moreover, it had to be ensured that the well houses, some of which are located several kilometres away from the plant and connected via a fibre-glass network, are able to continue self-sufficient operation and record data even in the event of a network failure. This is where the advantages of the latest system generation Plant iT V9 come to the fore: Saved data is now re-imported into the Plant iT measured value recording after re-establishing a connection. Limit value monitoring and burglary surveillance requested by IFS are maintained even if the connection breaks down. Furthermore, Plant iT V9 guarantees increased mineral spring availability through real-time monitoring of all the pumps. This way, problems are detected at an early stage and not just when the water stops flowing. Thanks to the continuous recording of measured values, Plant iT V9 also provides more precise information about the geological properties of the wells. The pump changeover from manual mode to automatic pump control in the control system was carried out during operation; downtime was restricted to just one hour. It took just five days to put the entire plant into operation. Final acceptance took place at the end of January 2015. The customer was more than satisfied and particularly praised the expertise of ProLeiT's staff and the fast implementation of desired modifications. In the next two years, Tönissteiner wishes to upgrade the existing syrup room, which currently uses the Plant iT solution Version 7, to the latest system generation V9.

he has been in charge of the ProLeiT subsidiary in Leverkusen and until recently was also responsible for all ProLeiT subsidiaries in Germany. The best known customers of the Dairy Industry & Non-carbonated Beverages Competence Center are probably Müller Milch/Sachsenmilch, Bauer and Eckes-Granini. Despite the planned enhancements, there will be no changes to the personal contact list for these and all other national and international customers. The team managers at the new department are Jochen Stamerjohanns (Dairy Industry), Thomas Kirner (Dairy Industry) and Stefan Ruff (Non-carbonated Beverages).

## ProLeiT AG: New Competence Center: Dairy Industry & Non-carbonated Beverages

[www.proleit.com](http://www.proleit.com)

The new Head of the ProLeiT subsidiary in Leverkusen will be Sascha Schwalenberg, who has been working there as a project manager for 10 years and was until recently also the subsidiary's deputy manager.